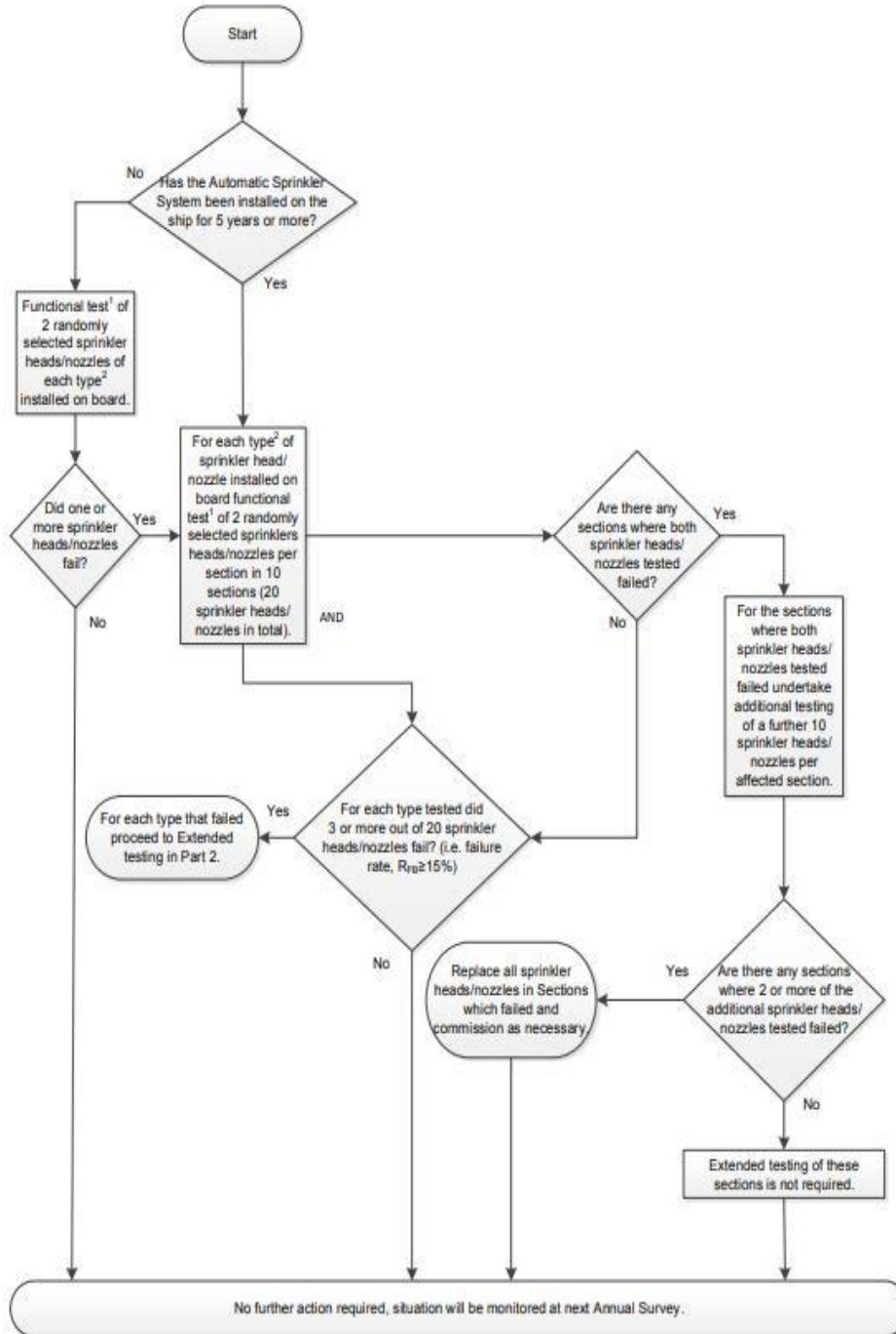


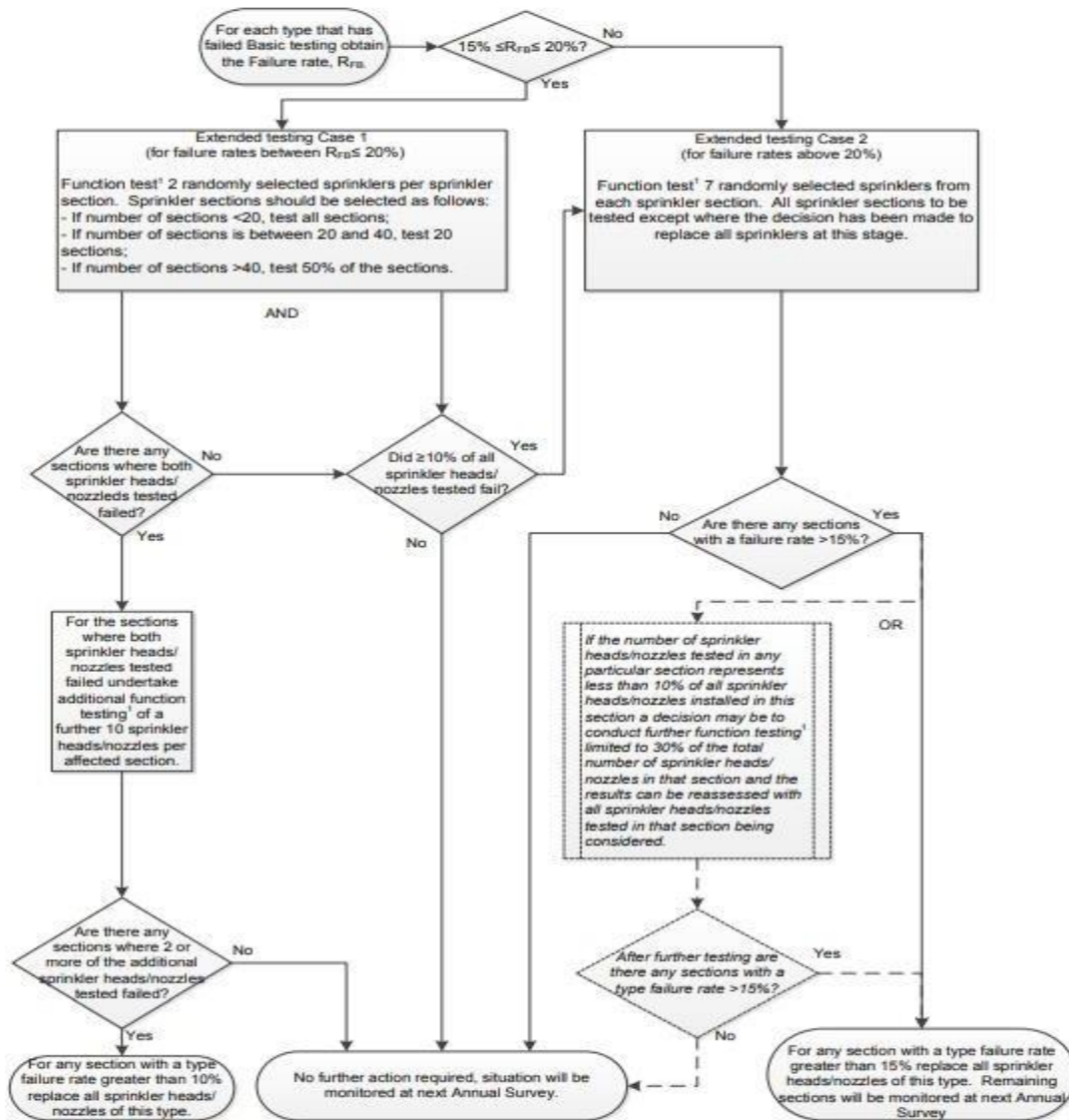
Merchant Marine Circular

Part 1 - Basic Testing



Merchant Marine Circular

Part 2 - Extended testing



Explanatory notes to the Flowchart:

1. Functional test is defined as a test that demonstrates the operation and flow of water from sprinkler head/nozzle.
2. Type is defined as each different manufacturer model of sprinkler head/ nozzle.

Merchant Marine Circular

3. Static / standby pressure is defined as the constant pressure maintained in the system at all times prior to activation.
 4. All testing should be carried out at static / standby pressure.
 5. Failure rate (RFB) is the number of sprinkler heads/nozzles to fail testing divided by the test sample size multiplied by 100;
 - r. During basic testing, and extended testing when applicable, of automatic sprinkler heads/nozzles as outlined in subparagraph (q.), water quality testing should be conducted in each corresponding piping section. Note – should a tested sprinkler fail, assessing the corresponding water quality at that time would assist in determining the cause of failure.
- 3.6.6. Ventilation systems and fire dampers:**
- a. test all fire dampers for remote operation;
 - b. verify galley exhaust ducts and filters are free of grease buildup; and
 - c. test all ventilation controls interconnected with fire-protection systems for proper operation.
- 3.6.7. Fire doors:**
- a. Test all remotely controlled fire doors for proper release.
- 3.6.8. Breathing apparatus:**
- a. check breathing apparatus air recharging systems, if fitted, for air quality;
 - b. check all breathing apparatus face masks and air demand valves are in serviceable condition; and
 - c. check EEBDs according to maker's instructions.
- 3.6.9. Fixed dry chemical powder systems:**
- a. visually inspect all accessible components for proper condition;
 - b. verify the pressure regulators are in proper order and within calibration; and
 - c. agitate the dry chemical powder charge with nitrogen in accordance with system manufacturer's instructions.
(Note: Due to the powder's affinity for moisture, any nitrogen gas introduced for agitation must be moisture free.)
- 3.6.10. Fixed aerosol extinguishing systems:**
- a. Verify condensed or dispersed aerosol generators have not exceeded their mandatory replacement date. Pneumatic or electric actuators should be demonstrated working, as far as practicable.
- 3.6.11. Portable foam applicators:**
- a. verify all portable foam applicators are set to the correct proportioning ratio for the foam concentrate supplied and the equipment is in proper order;
 - b. verify all portable containers or portable tanks containing foam concentrate remain factory sealed, and the manufacturer's recommended service life interval